

IT'S TIME FOR

FUN IN THE SUN



GROWING PASSION

GROWING PASSION

spring 2020



TURF TAMER, INC.
A LANDSCAPE DEVELOPMENT FIRM

Shorts and sandals weather is right around the corner, which means you're probably looking at dates for a fun trip for the entire family. You may have an exciting vacation coming up, but our team will be hard at work creating great escapes that are a little closer to home.

As you compare hotels, I invite you to look out your window and imagine five star amenities you can enjoy every day. In between booking flights, picture yourself walking out your backdoor and feeling like you've arrived.

These are the experiences we strive to achieve for our customers. We'd love to collaborate with you and turn your home into a destination you want to explore for years to come.

Cheers to sunshine and new design,



Lee Buffington

Passion In Every Project™



Get inspired



NEW PLANTINGS
(FUTURE)

KITCHEN

OWNER'S OVEN W/ WOODEN
ISLE
RESIDE
EXPOSED
(6'x6" - C)

PAVING -
CLASSIC

FIREPLA
(5'-6" W X
(2'x5'-6")

WORKA
& DRAIN

Design More Memories



Put your plans
in motion



Fire up the grill and pour yourself a tall glass of time well spent.

Whether you're having a few friends over or inviting the whole neighborhood, having well designed spaces to gather is essential.



MAKE A

Splash



*Start blowing up
the pool floats*

Having a swimming pool is great for beating the heat. But what if your backyard was flowing with movement to create a lavish oasis? Our design experts can work with you to build bold water features like waterfalls and fountains.

Texture helps lay the groundwork in a space, no matter what style you're drawn to. Play around with color and mix materials to add depth and dimension to your outdoor living spaces.



Revamp where you relax



Set the tone for the Season



- 2'50" X 30" HT. STONE PIERS @ POSTS W/ FENCE ON TOP (PAINT TO MATCH RES.)
- 2"X4" - SAIDE TIMBERS
- 2"X8" - CROSS MEMBERS
- 2"X6" - BEAMS
- 2"X12" - BEAMS
- 6"X6" - POSTS CLAD W/ CEDAR TO MAKE 8"X8"





TURF TAMER, INC.
A LANDSCAPE DEVELOPMENT FIRM

2204 Airport Road West
Ft. Payne, al 35968



Torch Award for
Marketplace Ethics
Trust • Performance • Integrity
Winter 2022



Torch Award for
Marketplace Ethics
Trust • Performance • Integrity
Winter 2022



ACCREDITED
BUSINESS



TurfTamerInc.Com

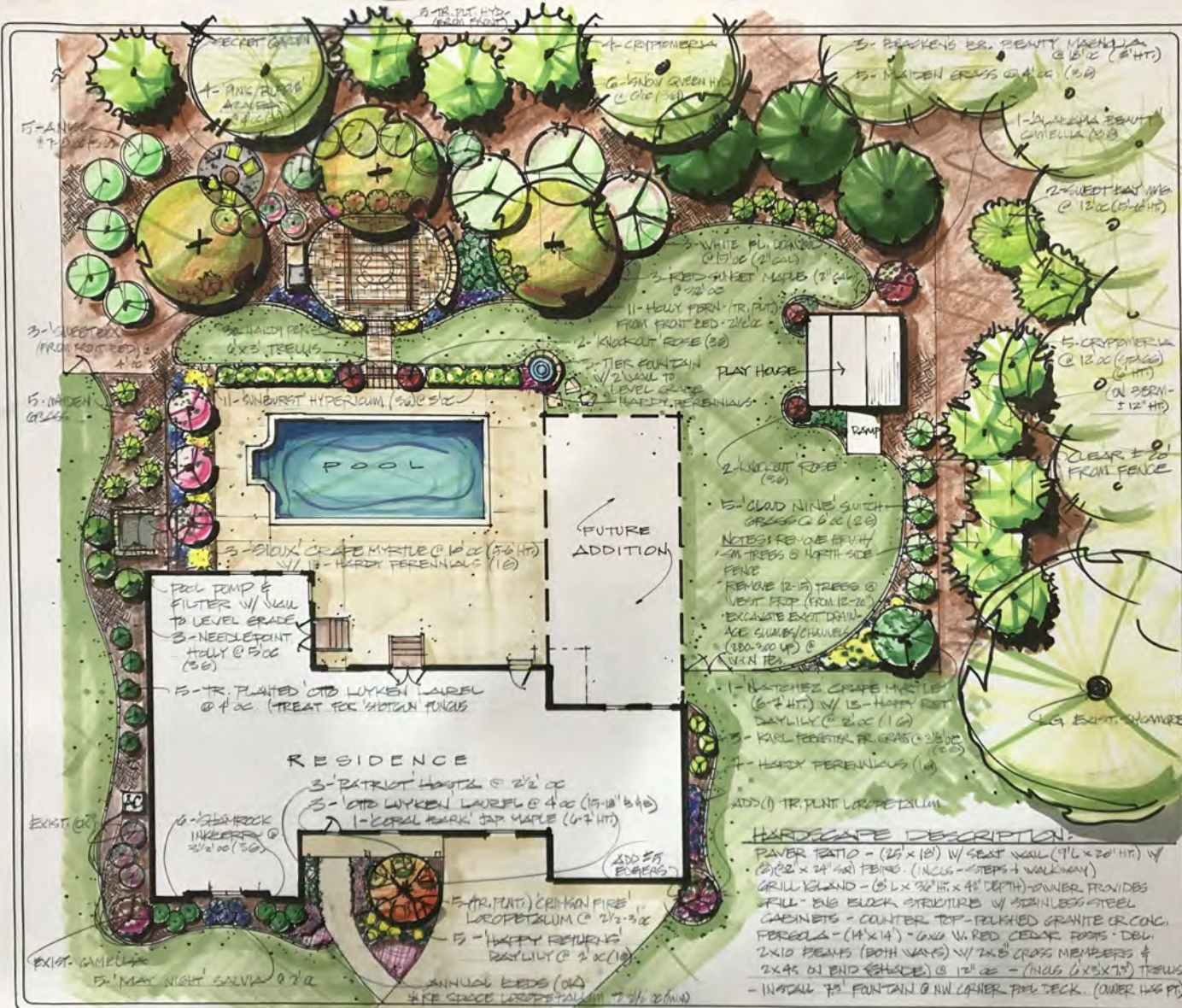


CHATTANOOGA
(423) 243 3900

HUNTSVILLE
(256) 763 7711

FORT PAYNE
(256) 845 9060

BIRMINGHAM
(205) 660 8873



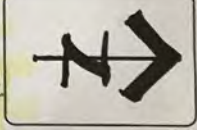
NOTES
TURF TAMER, INC.
A LANDSCAPE DEVELOPMENT FIRM

CONTRACT PROVISIONS
All data, drawings, documents and materials provided by Turf Tamer, Inc. are the property of Turf Tamer, Inc. and shall remain the property of Turf Tamer, Inc. and shall not be used for any other project without the written consent of Turf Tamer, Inc. Turf Tamer, Inc. shall not be held responsible for any errors or omissions in this drawing and shall not be held responsible for any damage or injury to any person or property resulting from the use of this drawing. Turf Tamer, Inc. shall not be held responsible for any damage or injury to any person or property resulting from the use of this drawing. Turf Tamer, Inc. shall not be held responsible for any damage or injury to any person or property resulting from the use of this drawing.

Please review all proposals. The proposed schedule of work and cost for this Turf Tamer, Inc. project is based on the information provided in this drawing. The proposed schedule of work and cost for this Turf Tamer, Inc. project is based on the information provided in this drawing. The proposed schedule of work and cost for this Turf Tamer, Inc. project is based on the information provided in this drawing.

TURF TAMER, INC.
A LANDSCAPE DEVELOPMENT FIRM
Mission To Every Project

DATE	1-17
DESIGNER	FB
SCALE	
PROJECT NO.	LS-1



LANDSCAPE
PLAN

DATE	1-17
DESIGNER	FB
SCALE	
PROJECT NO.	LS-1